

# Twisted Rib Baby Hat

adjustments for larger size in parenthesis

## materials & gauge:

- Ⓢ dpns or circular needles – 5.5 mm (us 9)  
or size necessary to achieve gauge
  - Ⓢ heavy worsted weight yarn  
(label gauge: 18 sts = 4" using 5 mm/US 8 needles)
- preemie large:  
MC: 45 yards
- newborn:  
MC: 50 yards
- gauge: 21 st/ 22 r = 4" in stitch pattern

*all yarn requirements are approximate*

## abbreviations:

<b>k:</b> knit	<b>RT3:</b> k3tog, but do not remove sts from left needle. yo, then knit first stitch on left needle again.
<b>p:</b> purl	Allow all three stitches to drop from needle.
<b>k2tog:</b> knit 2 sts together as one	<b>st(s):</b> stitch(es)
<b>k3tog:</b> knit 3 sts together as one	<b>s2kp:</b> slip 2 stitches together knitwise, knit next stitch. Pass 2 slipped stitches over (a centered double decrease)
<b>rnd(s):</b> round(s)	<b>yo:</b> yarn over
<b>RT2:</b> k3tog, but do not remove sts from left needle. then knit first stitch on left needle again.	
Allow all both stitches to drop from needle. (a decrease)	

yarn used in photo: Yarn Bee Soft & Sleek Prints (Denim)



## stitch pattern:

(8 stitch, 4 row repeat - chart below)

- 1: \*RT3, p1, k1, p1, k1, p1.  
repeat from \* around.
- 2-4: \*k3. p1, k1, p1, k1, p1.  
repeat from \* around.

## instructions:

with MC, cast on 48 (54).

ribbing: \*k3. p1, k1, p1, k1, p1.  
repeat from \* around

work ribbing for (5/7 rnds)

## crown:

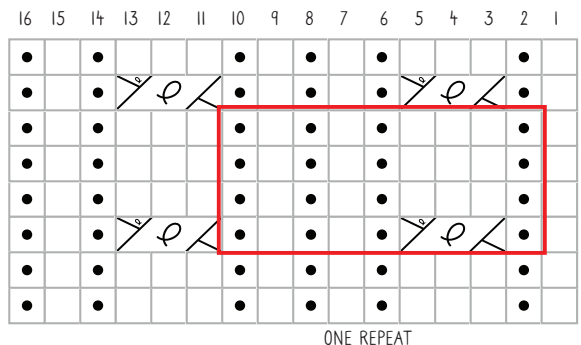
- Ⓢ work around in stitch pattern for 2(3) stitch pattern repeats.
- Ⓢ end by working rnd 1 of the stitch pattern one more time.

## decreases:

- 1: \*k3, p1, k1, k2tog, p1. repeat from \* around (42/49 sts)
- 2: \*k3, p1, k2, p1. repeat from \* around.
- 3: \*RT2, p1, k2tog, p1. repeat from \* around (30/35 sts)
- 4: \*k2, s2kp. repeat from \* around (18/21 sts)
- 5: \*k2tog, k1. repeat from \* around (12/14 sts)
- 6: k2tog around. (6/7 sts)

## finishing:

- Ⓢ cut 6" tail and thread through loops
- Ⓢ pull tight, weave through inside to secure and clip ends.
- Ⓢ weave in end at cast on edge.



## Stitch Pattern Key

- knit
- purl
- ⚡ RT3

TERMS OF USE ... This is a pattern for charity or personal use only - neither it, nor items made from it, are to be sold!

You may provide a direct link to this pattern, but may not copy the contents to your web site or any other form of communication. Photocopies may be made and shared as long as the copyright notice and terms of use are visible. If you choose to make these for yourself or family, please also consider making a pair for charity! Check the charity links page at [www.p2designs.com](http://www.p2designs.com) for donation ideas.